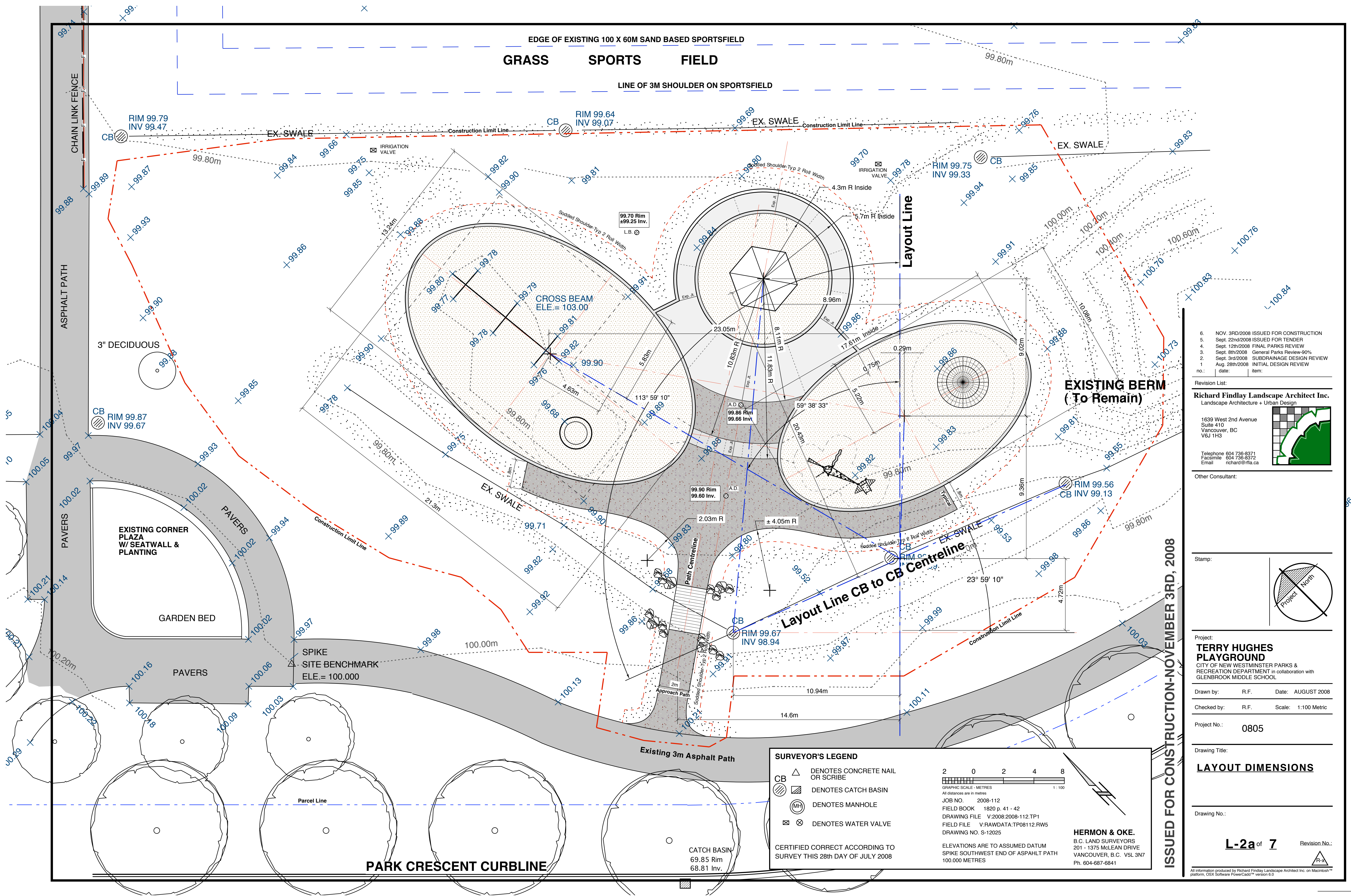


EDGE OF EXISTING 100 X 60M SAND BASED SPORTSFIELD
GRASS SPORTS FIELD

LINE OF 3M SHOULDER ON SPORTSFIELD

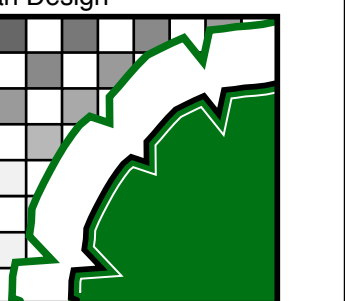


- 6. NOV. 3RD/2008 ISSUED FOR CONSTRUCTION
- 5. Sept. 22nd/2008 ISSUED FOR TENDER
- 4. Sept. 12th/2008 FINAL PARKS REVIEW
- 3. Sept. 8th/2008 General Parks Review-90%
- 2. Sept. 3rd/2008 SUBDRAINAGE DESIGN REVIEW
- 1. Aug. 28th/2008 INITIAL DESIGN REVIEW

Revision List:

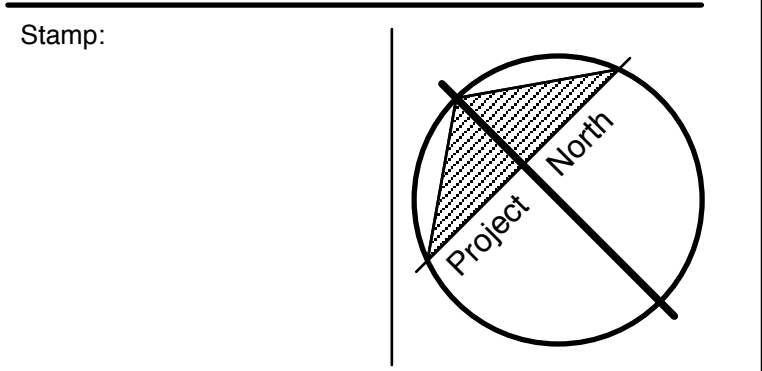
Richard Findlay Landscape Architect Inc.
 Landscape Architecture + Urban Design

1639 West 2nd Avenue
 Suite 410
 Vancouver, BC
 V6J 1H3



Telephone 604 736-8371
 Facsimile 604 736-8372
 Email richard@rfla.ca

Other Consultant:



Project:
TERRY HUGHES PLAYGROUND
 CITY OF NEW WESTMINSTER PARKS &
 RECREATION DEPARTMENT in collaboration with
 GLENBROOK MIDDLE SCHOOL

Drawn by: R.F. Date: AUGUST 2008

Checked by: R.F. Scale: 1:100 Metric

Project No.: 0805

Drawing Title:

LAYOUT DIMENSIONS

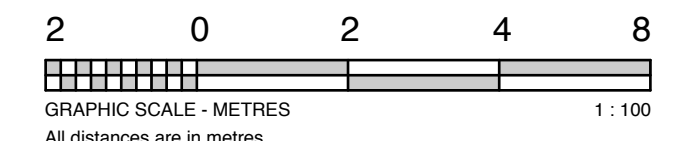
Drawing No.:

L-2a of 7 Revision No.:

SURVEYOR'S LEGEND

△	DENOTES CONCRETE NAIL OR SCRIBE
⊗	DENOTES CATCH BASIN
⊙	DENOTES MANHOLE
⊗	DENOTES WATER VALVE

CERTIFIED CORRECT ACCORDING TO SURVEY THIS 28th DAY OF JULY 2008



JOB NO. 2008-112
 FIELD BOOK 1820 p. 41 - 42
 DRAWING FILE V:2008-2008-112.TP1
 FIELD FILE V:RAWDATA:TP08112.RW5
 DRAWING NO. S-12025

ELEVATIONS ARE TO ASSUMED DATUM
 SPIKE SOUTHWEST END OF ASPHALT PATH
 100.000 METRES

HERMON & OKE.
 B.C. LAND SURVEYORS
 201 - 1375 McLEAN DRIVE
 VANCOUVER, B.C. V5L 3N7
 Ph. 604-687-6841

ISSUED FOR CONSTRUCTION-NOVEMBER 3RD, 2008

PARK CRESCENT CURBLINE

CATCH BASIN
 69.85 Rim
 68.81 Inv.